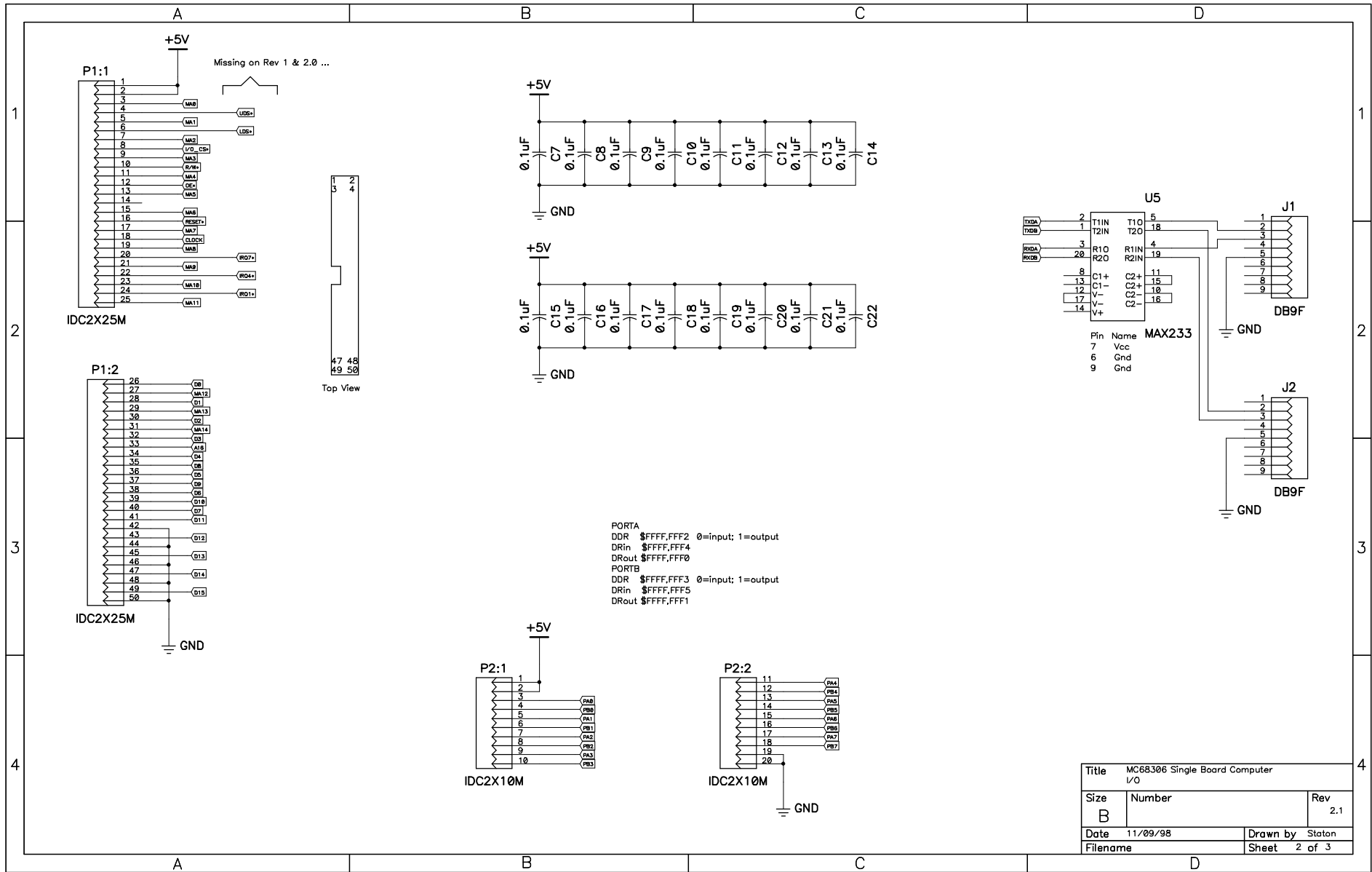


Title MC68306 Single Board Computer Processor		
Size B	Number	Rev 2.1
Date 11/09/98	Drawn by Stoton	
Filename	Sheet 1 of 3	



Missing on Rev 1 & 2.0 ...

Top View

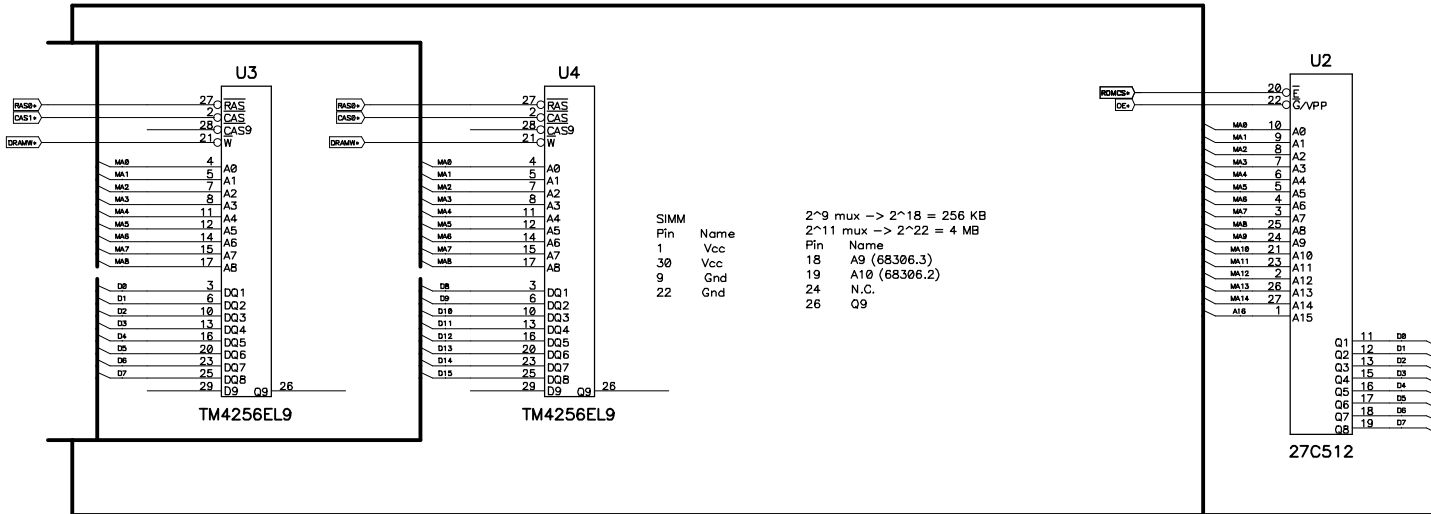
```

PORTA
DDR $FFFF,FFF2 0=input; 1=output
DRin $FFFF,FFF4
DRout $FFFF,FFF0
PORTB
DDR $FFFF,FFF3 0=input; 1=output
DRin $FFFF,FFF5
DRout $FFFF,FFF1

```

Title MC68306 Single Board Computer		
I/O		
Size B	Number	Rev 2.1
Date 11/09/98	Drawn by Stalon	
Filename	Sheet 2 of 3	

RAS => Bank  
 CAS0 => D15..8  
 CAS1 => D7..0  
 (page 5-13)



SIMM

Pin	Name	Pin	Name
1	Vcc	18	A9 (68306.3)
30	Vcc	19	A10 (68306.2)
9	Gnd	24	N.C.
22	Gnd	26	O9

2^9 mux -> 2^18 = 256 KB  
 2^11 mux -> 2^22 = 4 MB

Low  
 (EMP20 DEV=2 SPL=2)

High  
 (EMP20 DEV=1 SPL=2)

(2) 1Mx8 1M word  
 100000..1FFFFF  
 {A0..A19} => MA0..MA9  
 configure DRSZ2..0 = 001  
 configure DBC0 DR0H = \$0011 DR0L = \$FFC2  
 configure DREF = \$0E (14 decimal at 16.0MHz)  
 A20 = 1  
 A19 = 0  
 A18 = 0  
 A17 = 0

Title MC68306 Single Board Computer Memory		
Size B	Number	Rev 2.1
Date 11/09/98	Drawn by Stoun	
Filename	Sheet 3	of 3